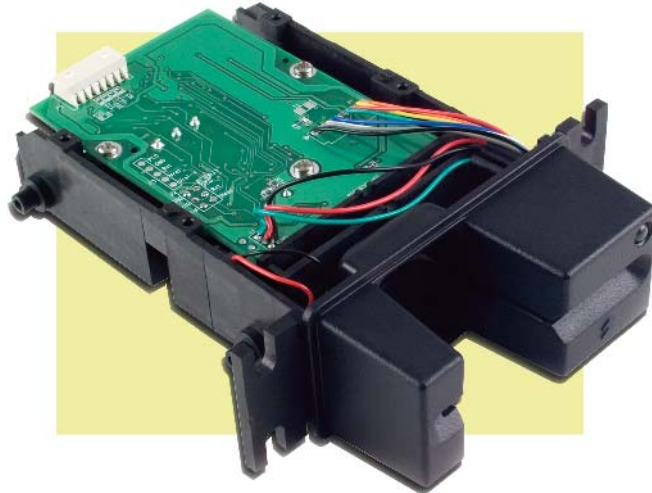


SPECTRUM™ III MOIR INSERT READER

Intelligent OEM Module

for Magnetic Stripes

RS-232, USB-HID, USB-HID-KB, USB-CDC, and Keyboard Wedge Interfaces



Reads magnetic stripes.

ID TECH's Spectrum Magstripe Only Insert Reader (MOIR) is designed to read and decode up to three tracks of magnetically-encoded information. It reliably reads media conforming to ISO 7810 and 7811 standards and it reads most formats like AAMVA for driver licenses. The magnetic head is spring-loaded to ensure good contact with warped or bowed cards.

Intelligent interface options.

The MOIR provides many communication options: RS232 Serial, USB-CDC (virtual COM), USB-HID, USB-HID-KB, and Keyboard Wedge (PS/2). Both OPOS & JPOS support is provided. PC operating system provides the USB-CDC drivers for standard operating function. Most keyboard language types are supported for keyboard wedge operation. Other drivers and support are available from ID TECH.

Selects and formats data.

The ID TECH Hybrid Insert Reader is a fully-intelligent unit that can be configured to read all tracks or selected tracks from a magnetic stripe. It can also output data with a terminating character and up to nine prefix and/or postfix characters to match a data format expected by the host. ID TECH provides a Configuration Utility for configuration of the reader interface and the output data format. The PC based software application is available to download from the ID TECH website.

Industry compatible footprints and applications.

The reader chassis is molded from a fiber-filled engineering plastic that supports the magnetic head and PCB. A molded bezel (choice of standard, metal, or flush mount) attaches to the chassis. An optional tri-color LED guides the user through the reading process and signals successful and unsuccessful reads. In addition, the reader offers debris gate. A debris opening allows debris to fall away and not obstruct the card slot.

Spectrum™ III Intelligent Magstripe Only Insert Reader Specifications

Electrical

RS-232:	+5 VDC/45mA (power adapter regulated 5 VDC/250mA or equivalent).
USB & Keyboard:	+5 VDC/45mA power supplied by the host computer.
Operating Current:	45 mA maximum for three tracks of magnetic data.
Chassis Ground:	Connected to GND and magnetic head case.

Environmental

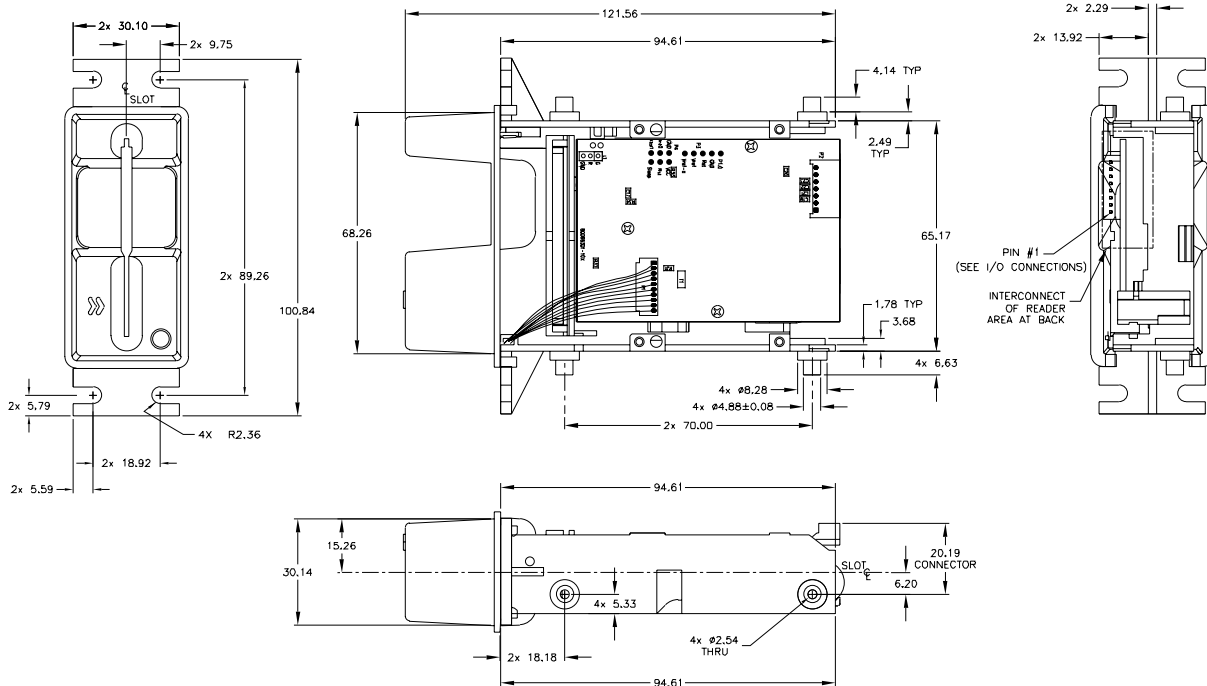
Operating Temperature:	32° F to 131° F (0° C to 55° C).
Storage Temperature:	-40° F to 158° F (-40° C to 70° C).
Humidity:	Maximum 95% non-condensing.

Reliability

Magnetic Head Life:	1,000,000 cycles minimum.*	*All wear reliability is based on operation in a benign environment.
Chassis and Bezel:	1,000,000 card cycles minimum.*	
Warranty:	One year, parts and labor.	

Mechanical

Magnetic Stripe Formats:	ISO 7811, AAMVA driver license format, and coercivity of 300 to 4,200 Oersted.
Reading Speed:	3 to 50 inches per second.
Media Thickness:	.025 to .035 inches. Maximum card thickness .035 inches.
Dimensions:	Length: 4.64 inches (117 mm). Width: 3.97 inches (101 mm). Height: .389 inches (9.88 mm).
Options:	Standard, Flush, & Metal Bezels. Gate, LED Indicator, "Card Seated" Sensor, "Card Present" Sensor.
Insert Reader Footprint:	



10721 Walker Street
Cypress, California 90630
(714) 761-6368 Fax: (714) 761-8880
Visit us at www.idtechproducts.com
ISO 9001-2000 Certified

IDTECH[®]
Value through Innovation